


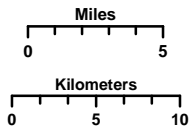
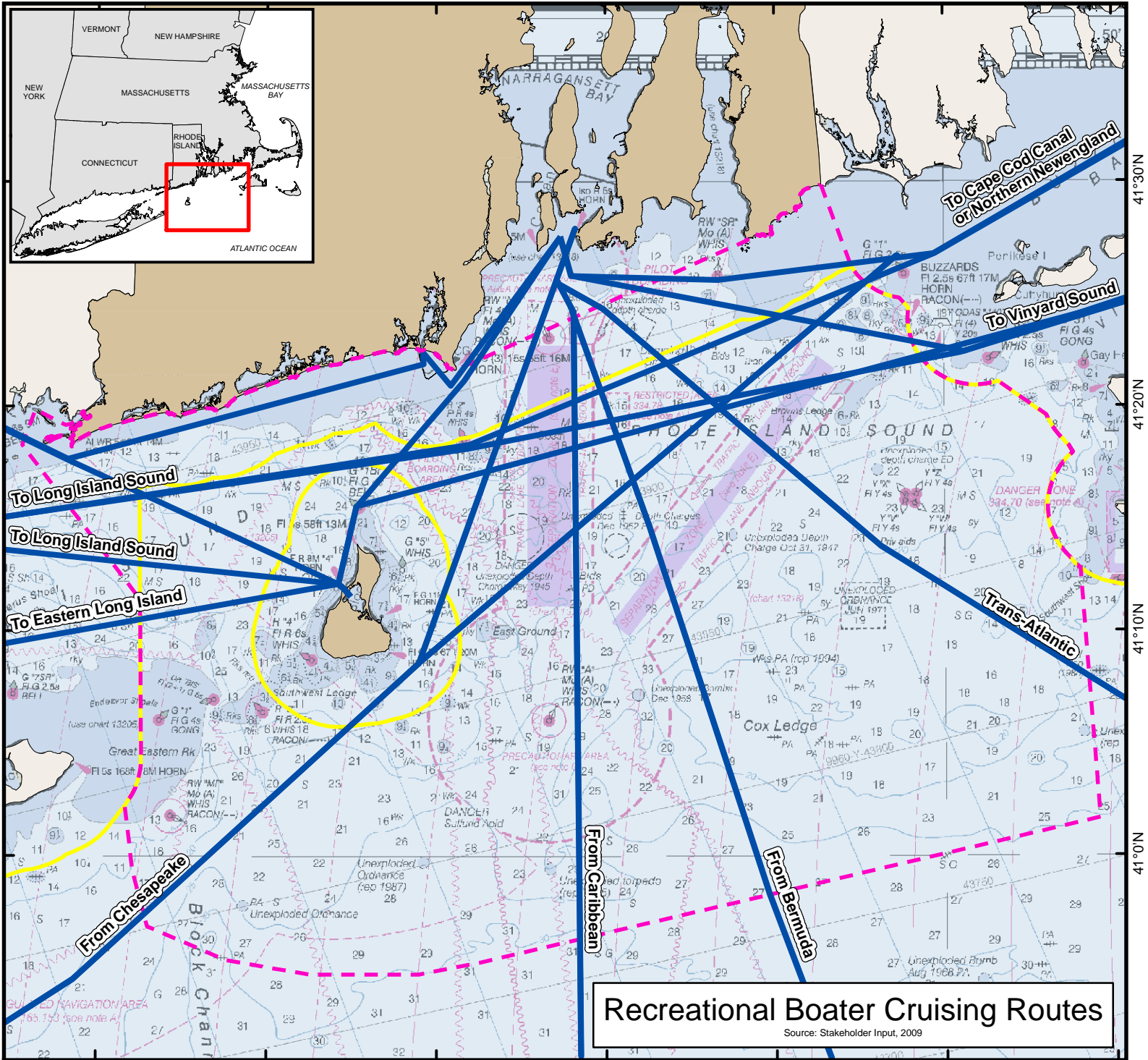


# Rhode Island Ocean Special Area Management Plan (SAMP)

71°50'W 71°40'W 71°30'W 71°20'W 71°10'W 71°0'W 70°50'W

## Map Key

-  OceanSAMP Study Area
-  State Waters
-  Sailing and Cruising Routes



Coordinate System:  
 Projection: RI Stateplane  
 Units: Feet  
 FIPS Zone: 3800  
 Datum: NAD83

Map Base Data:  
 State Borders: RIGIS; MAGIS; CTGIS  
 SAMP Study Area: RI SAMP Database  
 State Waters: MMS SLA Boundary  
 Bathymetry: Interpolated from NOS Soundings

For Project Background Information:  
<http://seagrant.gso.uri.edu/oceansamp>

For Project Map and Data Products:  
[http://www.narrbay.org/d\\_projects/oceansamp](http://www.narrbay.org/d_projects/oceansamp)



## Recreational Boater Cruising Routes

Source: Stakeholder Input, 2009

41°30'N  
41°20'N  
41°10'N  
41°0'N